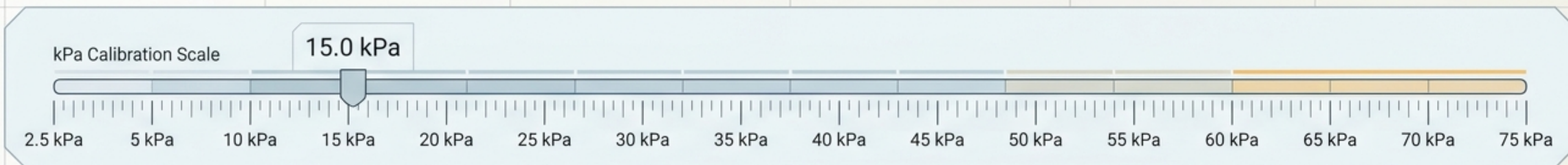


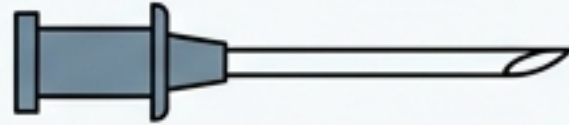
The AGA Liver Stiffness Diagnostic Blueprint

Evidence-based VCTE and MRE thresholds for staging fibrosis, diagnosing cirrhosis, and clinical triage.



The Paradigm Shift: From Histology to Elastography

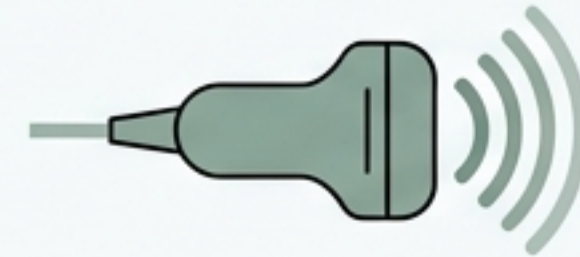
The Legacy Gold Standard



Percutaneous Liver Biopsy

- Highly accurate but invasive.
- Associated with significant pain (up to 30%).
- Hospitalization rate of 2–3%.
- Mortality rate of up to 0.33%.
- Prone to sampling error and difficult to repeat for serial assessments.

The Modern Standard



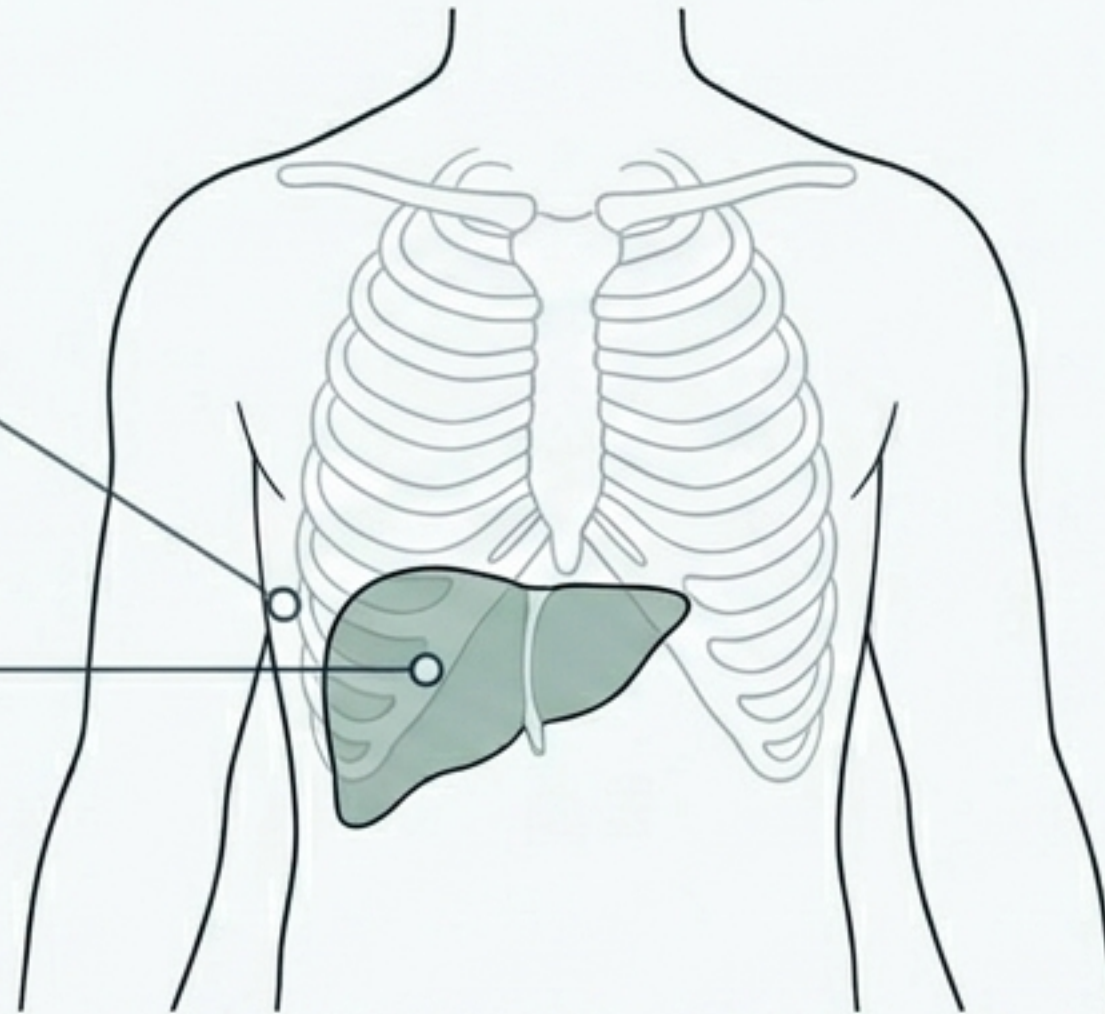
Vibration-Controlled Transient Elastography (VCTE)

- Point-of-care, rapid, and non-invasive.
- Measures liver stiffness on a numerical continuum of 2.5 to 75 kPa.
- Validated in large worldwide cohorts.

Anatomy of a Valid VCTE Scan

Target 1: 9th to 11th intercostal space

Target 2: 25–65 mm (M-probe) or 35–75 mm (XL-probe) below skin surface



The Validation Dashboard

- Requires ≥ 10 valid measurements.
- Requires Interquartile Range (IQR)/Median value of $\leq 30\%$.

Clinical Contraindications / Limitations



Obesity
(without XL probe)



Acute
hepatitis



Severe alcohol
abuse



Food intake
within 2-3 hours



Congestive
heart failure



Extrahepatic
cholestasis

Diagnostic Modality Matchup: Imaging Overcomes Serum Limitations

	VCTE	APRI	FIB-4
HCV Cohort	Sens 0.89 / Spec 0.91	Sens 0.77 / Spec 0.78	Sens 0.87 / Spec 0.91
HBV Cohort	Sens 0.86 / Spec 0.85	Sens 0.66 / Spec 0.74	Sens 0.87 / Spec 0.65

Key Insight: VCTE provides distinctly superior sensitivity and specificity.

AGA Strong Recommendation: Use VCTE over APRI/FIB-4 to detect cirrhosis in chronic HCV.
(Conditional recommendation for HBV).

The Threshold Logic: Prioritizing Sensitivity Over Specificity

Harm of Missing Cirrhosis (False Negatives)

The panel intentionally selected conservative cutoffs to ensure patients with actual cirrhosis are not missed and denied life-saving HCC/variceal screening.

Harm of Missing Cirrhosis (False Negatives)

Harm of Overdiagnosis (False Positives)

Falsely labeling a patient with cirrhosis causes minimal clinical harm. Downstream consequences (like ultrasound screening) are non-invasive, and falsely labeled patients frequently have F3 advanced fibrosis that benefits from screening anyway.



Diagnosing Cirrhosis in Chronic Hepatitis C (HCV)



Pooled Sensitivity:
0.86

Pooled Specificity:
0.91

Misclassifies <5% of patients as not having cirrhosis.

Action

Initiate downstream management (HCC and variceal surveillance).

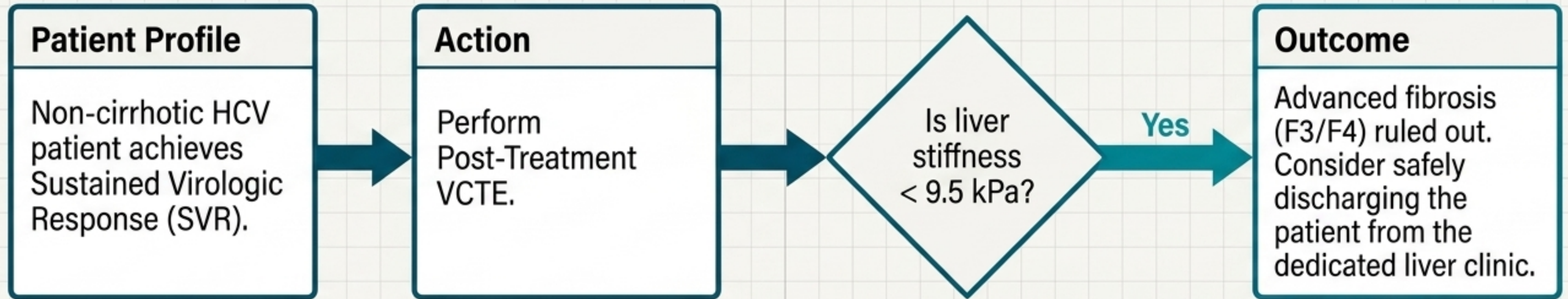
Mitigating False Positives

Repeat elastography after viral cure will frequently show reduced stiffness. Do not use this 12.5 cutoff to solely mandate invasive endoscopy.

Evidence Level

Conditional recommendation, low-quality evidence.

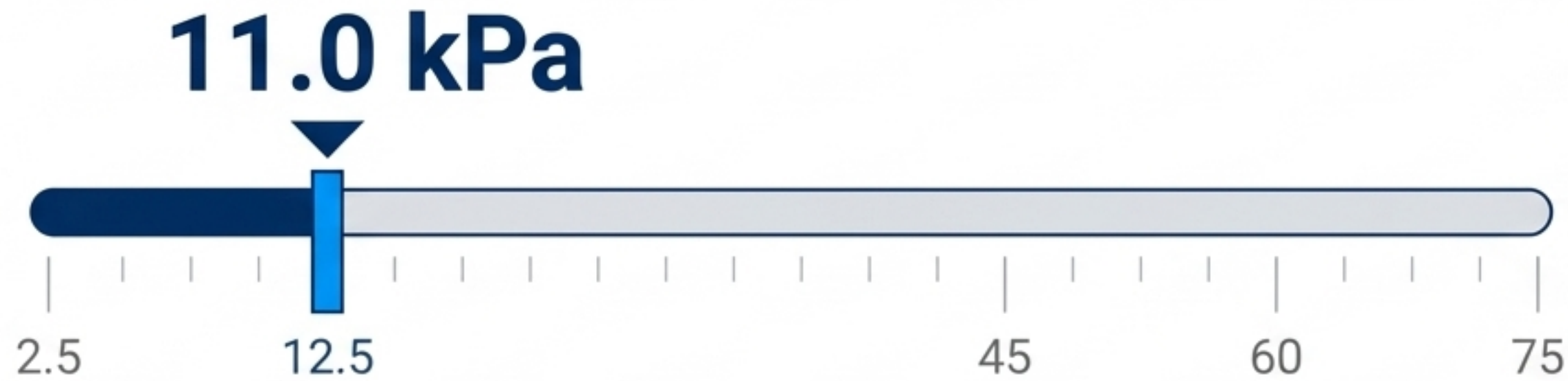
Post-SVR Pathway: Ruling Out Advanced Fibrosis in HCV



Risk Context

Misclassifies only 1% of low-risk patients. Patients placing high value on avoiding the minute risk of HCC may still elect to continue specialty care. (Conditional recommendation, very-low-quality evidence).

Diagnosing Cirrhosis in Chronic Hepatitis B (HBV)



Pooled Sensitivity: **0.81**

Pooled Specificity: **0.83**

The Trade-off

Minimizes false negatives (<1% in low-risk) at the expense of higher false positives (10-15%).

Mitigating Factors

Overcalling cirrhosis here does not alter HCC screening practices (many HBV patients require screening regardless of fibrosis extent).

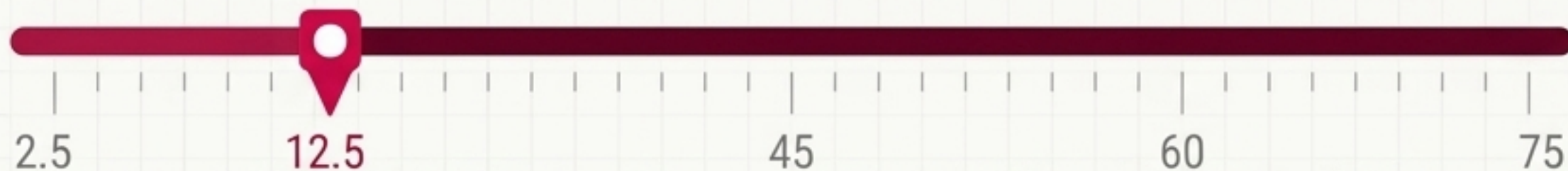
Stiffness readings often reduce post-viral suppression.

Evidence Level

Conditional recommendation, low-quality evidence.

Diagnosing Cirrhosis in Alcoholic Liver Disease (ALD)

12.5 kPa



Pooled Sensitivity:

0.95

Pooled Specificity:

0.71

Extreme Sensitivity

False negative rate is incredibly low (0.2% in low-risk, 1.5% in high-risk populations).

Warning

Cutoff derived only from patients with chronic alcoholic liver disease. It must not be applied to patients with acute alcoholic hepatitis (which artificially inflates stiffness).

Evidence Level

Conditional recommendation, low-quality evidence.

The NAFLD Exception: Escalating to Magnetic Resonance Elastography

VCTE in NAFLD: Knowledge Gap

Biopsy remains the gold standard. VCTE studies are subject to bias due to uninterpretable measurements and obesity limitations.

High-Risk NAFLD Matrix

Profile: Advanced age, obesity, central adiposity, diabetes, ALT >2x ULN (30% estimated cirrhosis prevalence).

MRE Sens **0.84** / Spec **0.89**

VCTE Sens **0.83** / Spec **0.72**

Guideline: Suggest MRE over VCTE for high-risk NAFLD.



**fewer false positives
per 1,000 patients**

(Using MRE compared to VCTE,
preventing unnecessary liver biopsies)

Complication Triage: Elective Surgery Pre-Op

17.0 kPa



Patient Profile

Adult with suspected chronic liver disease undergoing elective nonhepatic surgery.

Objective

Rule out Clinically Significant Portal Hypertension (CSPH).

Clinical Impact

Values < 17.0 kPa accurately rule out CSPH, minimizing the need for invasive preoperative testing like endoscopy or Hepatic Venous Pressure Gradient (HVPG) measurement.

Complication Triage: Ruling Out High-Risk Varices



Patient Profile

Patient with suspected compensated cirrhosis (with platelet count $>150,000/\mu\text{L}$, aligning with Baveno VI consensus).

Objective

Assess need for Esophagogastroduodenoscopy (EGD).

Clinical Impact

Values < 19.5 kPa accurately rule out high-risk esophageal varices. Obviates the need for routine endoscopic screening, sparing the patient inconvenience while safely avoiding acute variceal hemorrhage risk.

The AGA Liver Stiffness Threshold Blueprint

Disease / Scenario	Modality	Cutoff (kPa)	Primary Clinical Action	Evidence GRADE
Chronic HCV	VCTE	12.5	Detect Cirrhosis	Conditional / Low
HCV post-SVR	VCTE	< 9.5	Rule out advanced fibrosis (Discharge)	Conditional / Very Low
Chronic HBV	VCTE	11.0	Detect Cirrhosis	Conditional / Low
Alcoholic Liver Disease	VCTE	12.5	Detect Cirrhosis	Conditional / Low
High-Risk NAFLD	MRE	N/A	Detect Cirrhosis (over VCTE)	Conditional / Low
Pre-Op Triage	VCTE	< 17.0	Rule out portal hypertension	Conditional / Low
Compensated Cirrhosis	VCTE	< 19.5	Rule out high-risk varices (No EGD)	Conditional / Low

Caution: Thresholds are designed to minimize false negatives. Always interpret VCTE alongside complete clinical context.